

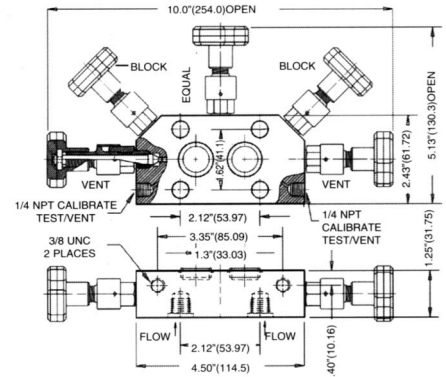
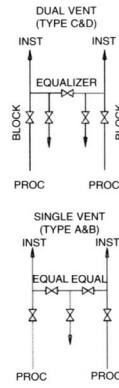
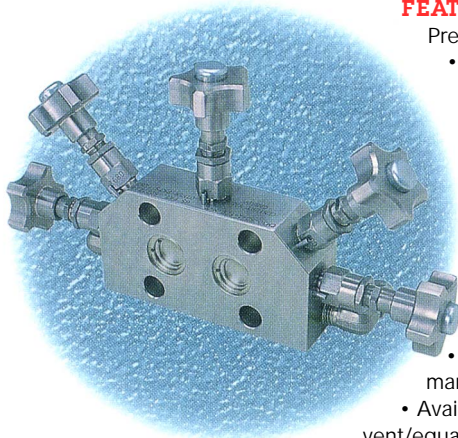
CM30-5

FEATURES

Pressures to 6000 psi/41370 KPa

- 5 valve manifold
- Designed for direct attachment to the new line of "smart" transmitters (Rosemount® series 3051/3095), without the need for co-planar or traditional flange adapters. Also available for direct mounting to all manufacturers' transmitters with standard 2.125" sensor spacings (eg. Rosemount® 1151)
- Vent valves integral in manifold body
- Available with optional angled mounted vent/equalizer valve to ensure ease of operation when mounted to a traditional series transmitter

- Available with either Double Vent/Single Equalize or Double Equalize/Single Vent
- Available with Century's exclusive non-rotating stem bonnet assembly



AVAILABLE OPTIONS

- Socket weld inlet connections
- Six valve configurations
- Installation of lifters to ensure a "bubble free" transmitter connection
- Custom mounting and testing transmitter manifold assemblies
- Swagelok®, Parker®, or Hoke® fittings
- 1/4" NPT inlet connection socket welded adapter to 1/2" NPT
- Special order for transmitter spacings of 2-3/16" or 2-1/4"

CM32 CLOSE CONNECT COUPLING ADAPTER

The CM32 coupling adapter provides flexibility for the installation of the CM30 series of manifolds. The CM32 includes a metal encased seal, and can be remade numerous times with compromise. The CM32 is available in a variety of NPT and socketweld connections to accommodate most installation requirements. The CM32 is also available in an eccentric configuration to provide a simple solution to variable centre to centre orifice flange spacings. The CM32 when coupled to a CM30 manifold provides the same dimension from process inlet to instrument outlet as is provided by traditional flanged manifolds, thus permitting ease of installation in retrofit situations.



ORDER INFORMATION

MODEL TYPE		STANDARD MATERIALS		CONNECTION INLET / OUTLET		BONNET ASSEMBLY TYPE		STEM SEAL		TEMPERATURE RANGE		SPECIAL CONSTRUCTION	
CM30-5A: 1.30 CTRS. SINGLE VENT		CM30-5B: 2.12 CTRS. SINGLE VENT		F29 - 1/4" NPT		SEE SPECIFIC MANIFOLD FOR AVAILABLE BONNET TYPES.		A - AFLAS®		23°F TO 400°F		SC-O = OXYGEN CLEANED	
CM30-5C: 1.30 CTRS. DUAL VENT		CM30-5D: 2.12 CTRS. DUAL VENT		S29 - 1/4 FSW		TYPES:		G - GRAFOIL™		-40°F TO 1000°F		SC-L = LOCKED PLATES	
CM30-3B: 2.12 CTRS. NO VENT		CM30-2A: 0.65 OFFSET, SINGLE VENT		ALL INLET CONNECTION ARE AT 2.125 CENTERS.		B - ROTATING BALL STEM/"O" RING		T - TEFLON®		-300°F TO 400°F		SC-A = ANGLED VALVE	
CM30-2B: 1.06 OFFSET, SINGLE VENT						BN - ROTATING NEEDLE STEM/"O" RING		V - VITON®		-184°C TO 204°C		SC-F = FITTING	
						F - ROTATING BALL STEM PACKING				-29°F TO 204°C			
						FN - ROTATING NEEDLE STEM PACKING							
						M - NON-ROTATING NEEDLE STEM/PACKING							
CODE	BODY	BONNET	ADJUSTER	STEM	HANDLE	DELTRIN®, VITRON®, TEFLON®, COPYRIGHT T.M. DUPONT CO AFLAS®, COPYRIGHT OF ASAHI GLASS CO. LTD. GRAFOIL™, PRODUCT OF UNION CARBIDE CORP							
1	316SS	316SS	303SS	316SS	303SS								
2	A105	316SS	303SS	316SS	303SS								
3	A108	A108	A108	303SS	A108								
CODES 1 & 2 MEET NACE MR0175-2002. ADDITIONAL CONSTRUCTION MATERIALS ARE AVAILABLE ON REQUEST.													

THE CM30 SERIES

CM34 & 35

DIRECT MOUNT MANIFOLDS

The CM34 and CM35 manifolds are designed to mount directly to the new generation of "smart" transmitters (e.g. Rosemount®) series 3051/3095) without the need for co-planar or traditional flanges resulting in the reduction of both possible leak points and installation space requirements. These manifolds can also be configured to mount directly to most manufacturers' transmitters with the traditional 2.125" spacing (e.g. Rosemount® 1151). The CM34/35 manifolds have been designed for high temperature, dirty and severe service installations. The large bore size provides improved instrument response time. Optional steam trace heat blocks are available for both models. By combining the CM34/35 with the CM32 coupling adapters, the manifold/transmitter unit can be directly mounted to the orifice taps. The heavy duty, severe service line/block valves are in-line repairable, and facilitate transmitter maintenance or replacement. Century Valve's full QA program ensures material traceability on all pressure boundary components.

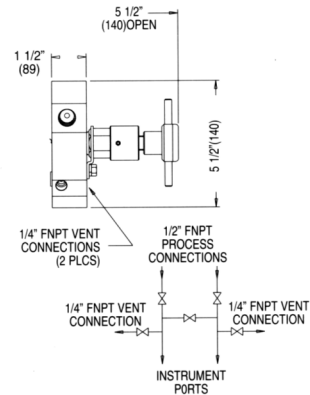
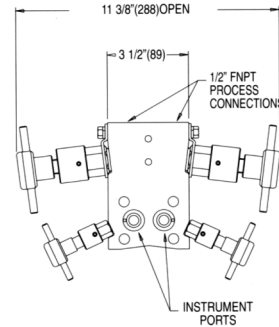
CM34 RODDABLE FIVE VALVE MANIFOLD

The CM34 direct mount manifold was designed for direct attachment to the new line of "smart" transmitters (eg. Rosemount® series 3051/3095), without the need for a co-planar or traditional flange resulting in the reduction of both possible leak points and installation space requirements. This manifold can also be configured to mount directly to most manufacturers' transmitters with the traditional 2.125" spacing (eg. Rosemount® 1151). Compact in design, this manifold is ideally suited for limited installation space and instrument enclosures. Available only with the Century exclusive non-rotating stem bonnet assembly.

FEATURES

- Pressures to 6000 psi/41370 KPa
- Roddable 3/8" Bore
- Two 1/4" NPT vent, purge or calibration ports for attachment of tubing
- Designed for dirty and severe service

- Bonnets Available: Block Valves: L; Vent/Calibrate Valves: M
- Inlet/Outlet Connections Available: F4A, F4B, S4A, S4B



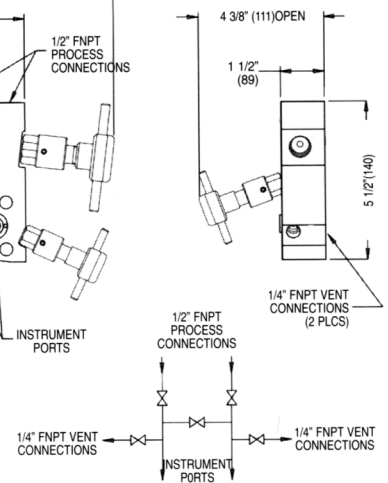
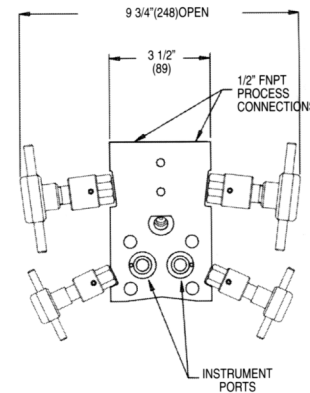
CM35 FIVE VALVE MANIFOLD

The CM35 five valve globe pattern, integral seat manifold has been designed for direct attachment to the new line of "smart" transmitters (eg. Rosemount® series 3051/3095), without the need for co-planar or traditional flange resulting in the reduction of both possible leak points and installation space requirements. This manifold can also be configured to mount directly to most manufacturers' transmitters with the traditional 2.125" spacing (eg. Rosemount® 1151). Compact in design, this manifold is ideally suited for limited installation space and instrument enclosures. Available with the exclusive Century non-rotating stem bonnet assembly.

FEATURES

- Pressures to 6000 psi/41370 KPa
- Available with threaded or socket weld connections
- Two 1/4 NPT vent, purge or calibration ports for attachment of piping or tubing
- Replaceable metal or soft seats
- Designed for dirty and severe service

- Bonnets Available: C, F, L, M Note: Block and Equalize Valves either C or L; Vent/Calibration Valves either F or M
- Inlet/Outlet Connections Available: F4A, F4B S4A, S4B



ORDER INFORMATION

CM35-5 - 1		F4A		LM		15		T		SCL	
MODEL TYPE	STANDARD MATERIALS	CONNECTION INLET / OUTLET				BONNET ASSEMBLY TYPE	SEAT MATERIAL	STEM SEAL	TEMPERATURE RANGE		SPECIAL CONSTRUCTION
CM MODEL#		F4A - 1/2" NPT X 1.30" CTRS				SEE SPECIFIC MANIFOLD FOR AVAILABLE BONNET TYPES.	SEE SPECIFIC MANIFOLD FOR AVAILABLE SEAT TYPES.		A - AFLAS®	23°F TO 400°F	SC-O = OXYGEN CLEANED SC-L = LOCK PLATES
CHOOSE MANIFOLD MODEL NUMBER FROM CATALOGUE TO SUIT REQUIREMENT.		F4B - 1/2" NPT X 2.125" CTRS					15-ARLON® 1000	G - GRAFOIL™	-40°F TO 1000°F		
		S4A - 1/2" SW X 1.30" CTRS					16-DELTRIN®	T - TEFLON®	-300°F TO 400°F		
		S4B - 1/2" SW X 2.125" CTRS						V - VITON®	-184°C TO 204°C		
		ADDITIONAL SPECIAL CONNECTIONS ARE AVAILABLE ON REQUEST.							-20°F TO 400°F		
CODE	BODY	BONNET	ADJUSTER	STEM	HANDLE						
1	316SS	316SS	303SS	316SS	303SS						
2	A105	316SS	303SS	316SS	303SS						
CODES 1 & 2 MEET NACE MR0175-2002. ADDITIONAL CONSTRUCTION MATERIALS ARE AVAILABLE ON REQUEST.						CM34 ONLY AVAILABLE WITH NON-ROTATING BONNET ASSEMBLY.		DELTRIN®, VITRON®, TEFLON®, COPYRIGHT T.M. DUPONT CO AFLAS®, COPYRIGHT OF ASAHI GLASS CO. LTD. GRAFOIL™, PRODUCT OF UNION CARBIDE CORP			

CM34 - 35 DIRECT MOUNTS